


QI Power Hour

**LEARNING THROUGH A PANDEMIC:
DEVELOPMENTAL EVALUATION AND
VACCINE DELIVERY**


With DR. GARY GROOT &
PATRICK FALASTEIN



1

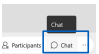
Welcome to QI Power Hour

Connect to audio using **Audio Broadcast**:




Click the button to start the broadcast

Do you have questions about connecting to audio? Use the **chat function** to message the Host, QI Power Hour, for assistance.




2



QI Power Hour

**LEARNING THROUGH A PANDEMIC:
DEVELOPMENTAL EVALUATION AND
VACCINE DELIVERY**

With DR. GARY GROOT &
PATRICK FALASTEIN




3

TREATY 6 TERRITORY & HOMELAND OF THE METIS

HQC is situated on Treaty 6 Territory and the Traditional Land of the Dakota, Lakota and Nakota, and is the Homeland of the Métis.

We pay respect to the treaties that were made on this land and acknowledge the harms and mistakes of the past. We are committed to move forward in partnership with Indigenous Nations in the spirit of reconciliation and collaboration.






4 Connect to Audio using Audio Broadcast

4

Access past QI Power Hour sessions


Past QI Power Hour webinars (with download links)

<p>Health Networks in Saskatchewan (QI Power Hour)</p>  <p>Nov 15, 2019 at 9:00 AM</p>	<p>Citizen Science in Public Health Policy: Leveraging the Power of Ubiquitous Tools</p>  <p>Oct 25, 2019 at 9:00 AM</p>	<p>The Costs of Poverty in Saskatchewan: Why Do They Matter and How Do We Calculate Them? (QI Power Hour)</p>  <p>Sep 6, 2019 at 9:00 AM</p>
---	---	---

[Visit our website to view past sessions!](#)

5 Connect to Audio using Audio Broadcast

5



Sign up for the QI Power Hour email newsletter

Receive notices about upcoming sessions and details on how to register straight to your in your inbox.

[Visit: bit.ly/hqc_subscribe](http://bit.ly/hqc_subscribe)

6 Connect to Audio using Audio Broadcast

6

Spread of QI Power Hour across SK

7

Connect to Audio using Audio Broadcast

7

Spread of QI Power Hour across SK

8

Connect to Audio using Audio Broadcast

8

Spread of QI Power Hour across SK

9

Connect to Audio using Audio Broadcast

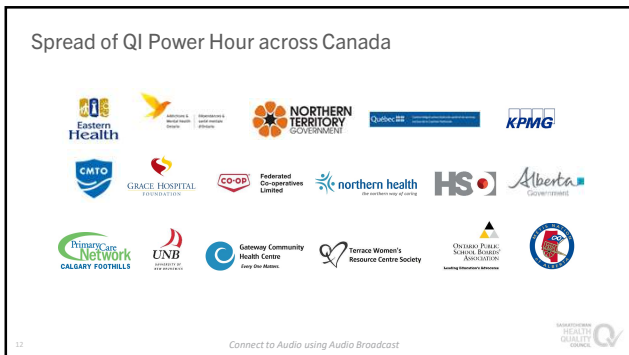
9



10



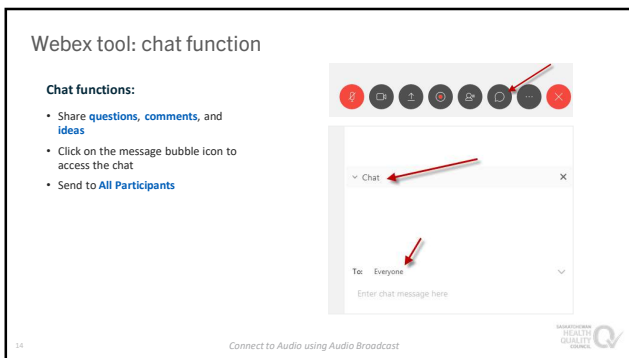
11



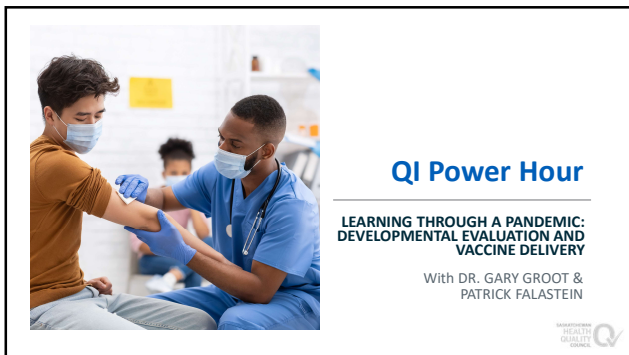
12



13



14



15

Learning Through a Pandemic:
Developmental evaluation and vaccine delivery

16

Session Overview

- What is developmental evaluation, how it aligns with QI approaches and when is it useful?
- Applying DE to vaccine rollout
- What we learned and how it was helpful?

17

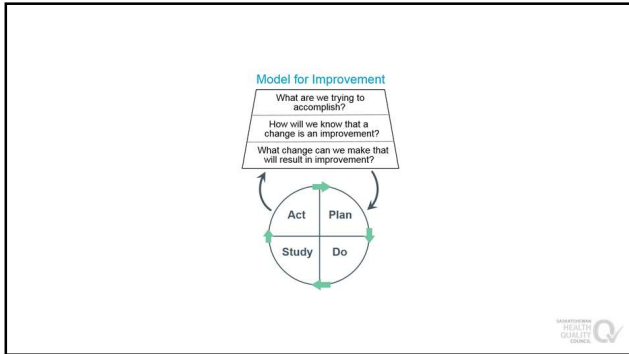
Developmental Evaluation Defined

"Evaluate processes, including asking evaluative questions and applying evaluation logic, to support program, product, staff and/or organizational development."

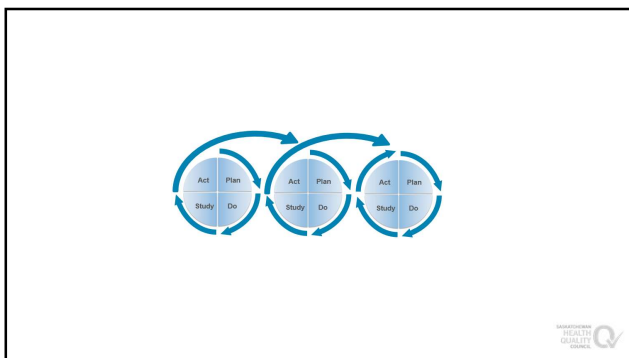
"The evaluator is part of a team whose members collaborate to conceptualize, design and test new approaches in a long-term, on-going process of continuous improvement, adaptation and intentional change."

"The evaluator's primary function in the team is to elucidate team discussions with evaluative questions, data and logic, and facilitate data-based decision-making in the developmental process."
-Michael Quinn Patton

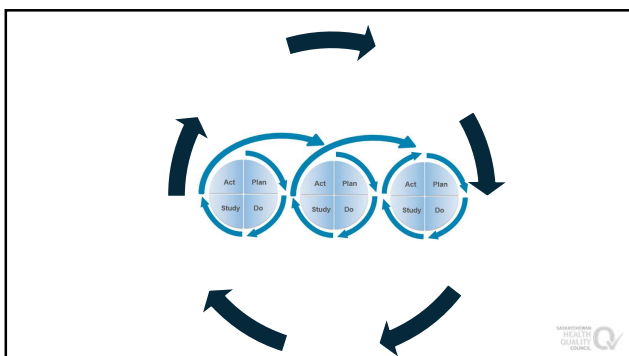
18



19



20




21

	Traditional Evaluation	Developmental Evaluation
Purpose	Supports improvement, summative tests and accountability	Supports development of innovation and adaptation in dynamic environments




22

	Traditional Evaluation	Developmental Evaluation
Purpose	Supports improvement, summative tests and accountability	Supports development of innovation and adaptation in dynamic environments
Roles & Relationships	Positioned as an outsider to assure independence and objectivity	Positioned as an internal team function integrated into the process of gathering and interpreting data, framing issues, surfacing and testing model developments




23

	Traditional Evaluation	Developmental Evaluation
Purpose	Supports improvement, summative tests and accountability	Supports development of innovation and adaptation in dynamic environments
Roles & Relationships	Positioned as an outsider to assure independence and objectivity	Positioned as an internal team function integrated into the process of gathering and interpreting data, framing issues, surfacing and testing model developments
Accountability	Focused on external authorities and funders based on explicit and pre-ordinate criteria	Centred on the innovators' values and commitment to make a difference




24

	Traditional Evaluation	Developmental Evaluation
Purpose	Supports improvement, summative tests and accountability	Supports development of innovation and adaptation in dynamic environments
Roles & Relationships	Positioned as an outsider to assure independence and objectivity	Positioned as an internal team function integrated into the process of gathering and interpreting data, framing issues, surfacing and testing model developments
Accountability	Focused on external authorities and funders based on explicit and pre-ordinate criteria	Centred on the innovators' values and commitment to make a difference
Options	Rigorously options-focused, traditional research and disciplinary standards of quality dominate	Utilization focused, options are chosen in service to developmental use




25

	Traditional Evaluation	Developmental Evaluation
Purpose	Supports improvement, summative tests and accountability	Supports development of innovation and adaptation in dynamic environments
Roles & Relationships	Positioned as an outsider to assure independence and objectivity	Positioned as an internal team function integrated into the process of gathering and interpreting data, framing issues, surfacing and testing model developments
Accountability	Focused on external authorities and funders based on explicit and pre-ordinate criteria	Centred on the innovators' values and commitment to make a difference
Options	Rigorously options-focused, traditional research and disciplinary standards of quality dominate	Utilization focused, options are chosen in service to developmental use
Measurement	Measure performance and success against pre-determined goals and SMART outcomes	Develops measures and tracking mechanisms quickly as outcomes emerge, measures can change during the evaluation as the process unfolds



26

	Traditional Evaluation	Developmental Evaluation
Purpose	Supports improvement, summative tests and accountability	Supports development of innovation and adaptation in dynamic environments
Roles & Relationships	Positioned as an outsider to assure independence and objectivity	Positioned as an internal team function integrated into the process of gathering and interpreting data, framing issues, surfacing and testing model developments
Accountability	Focused on external authorities and funders based on explicit and pre-ordinate criteria	Centred on the innovators' values and commitment to make a difference
Options	Rigorously options-focused, traditional research and disciplinary standards of quality dominate	Utilization focused, options are chosen in service to developmental use
Measurement	Measure performance and success against pre-determined goals and SMART outcomes	Develops measures and tracking mechanisms quickly as outcomes emerge, measures can change during the evaluation as the process unfolds
Evaluation Results	Detailed formal reports; validated best practices, generalizable.	Rapid, real time feedback; diverse, user-friendly forms of feedback. Evaluation aims to nurture learning



27

	Traditional Evaluation	Developmental Evaluation
Purpose	Supports improvement, summative tests and accountability	Supports development of innovation and adaptation in dynamic environments
Roles & Relationships	Positioned as an outsider to assure independence and objectivity	Positioned as an internal team function integrated into the process of gathering and interpreting data, framing issues, surfacing and testing model developments
Accountability	Focused on external authorities and funders based on explicit and pre-ordinate criteria	Centred on the innovators' values and commitment to make a difference
Options	Rigorously options-focused, traditional research and disciplinary standards of quality dominate	Utilization focused; options are chosen in service to developmental use
Measurement	Measure performance and success against pre-determined goals and SMART outcomes	Develops measures and tracking mechanisms quickly as outcomes emerge; measures can change during the evaluation as the process unfolds
Evaluation Results	Detailed formal reports; validated best practices, generalizable.	Rapid, real time feedback; diverse, user-friendly forms of feedback. Evaluation aims to nurture learning
Complexity & Uncertainty	Evaluator tries to control design implementation and the evaluation process	Learning to respond to lack of control; staying in touch with what's unfolding and responding accordingly

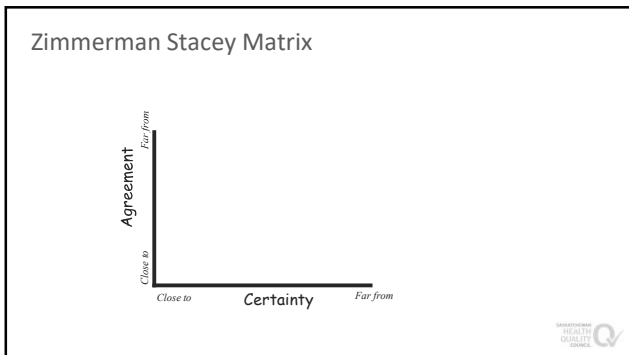


28

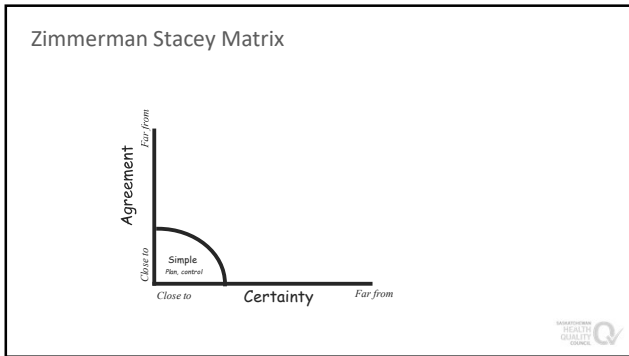
	Traditional Evaluation	Developmental Evaluation
Purpose	Supports improvement, summative tests and accountability	Supports development of innovation and adaptation in dynamic environments
Roles & Relationships	Positioned as an outsider to assure independence and objectivity	Positioned as an internal team function integrated into the process of gathering and interpreting data, framing issues, surfacing and testing model developments
Accountability	Focused on external authorities and funders based on explicit and pre-ordinate criteria	Centred on the innovators' values and commitment to make a difference
Options	Rigorously options-focused, traditional research and disciplinary standards of quality dominate	Utilization focused; options are chosen in service to developmental use
Measurement	Measure performance and success against pre-determined goals and SMART outcomes	Develops measures and tracking mechanisms quickly as outcomes emerge; measures can change during the evaluation as the process unfolds
Evaluation Results	Detailed formal reports; validated best practices, generalizable.	Rapid, real time feedback; diverse, user-friendly forms of feedback. Evaluation aims to nurture learning
Complexity & Uncertainty	Evaluator tries to control design implementation and the evaluation process	Learning to respond to lack of control; staying in touch with what's unfolding and responding accordingly
Standards	Methodological competence and commitment to rigor; credibility with external authorities/funders	Methodological flexibility and adaptability; systems thinking; creative and critical thinking balanced; high tolerance for ambiguity; open and agile



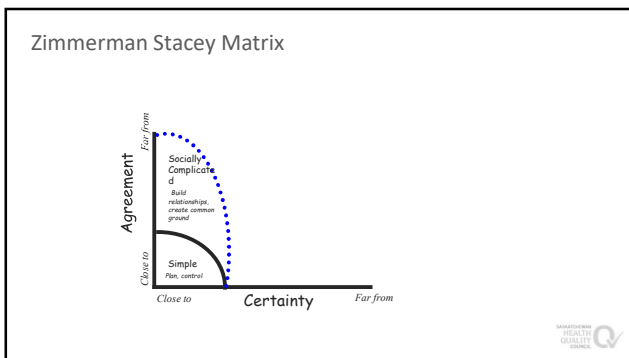
29



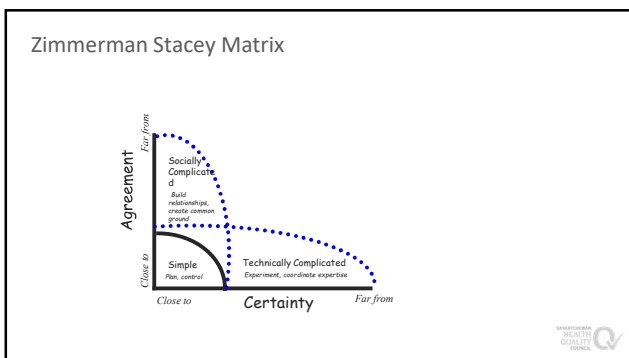
30



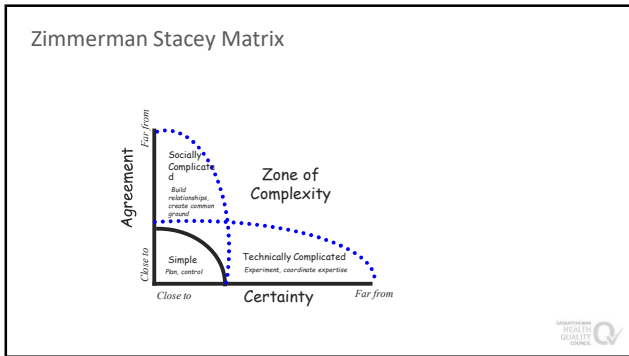
31



32



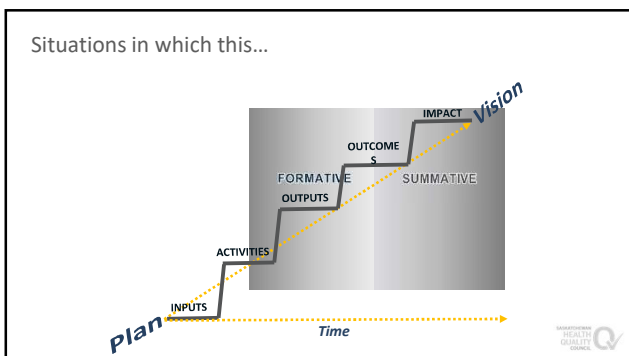
33



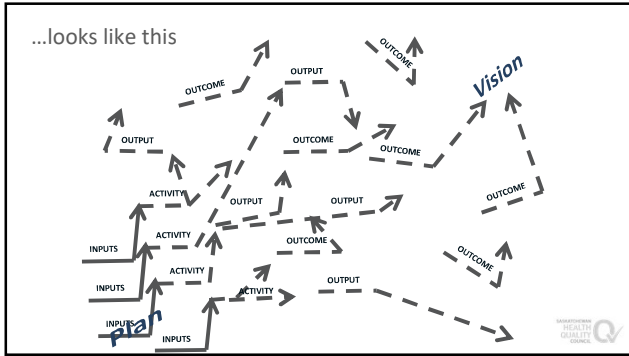
34



35




36



37


Summary

Developmental Evaluation is




Complex Environments

an evaluation approach that can assist innovators develop social change initiatives in complex or uncertain environments.



Innovation

is particularly suited to innovation, radical program re-design, replication, complex issues, crises



PDSA

in these situations, DE can help by: framing concepts, test quick iterations, tracking developments, surfacing issues.

UNIVERSITY OF MICHIGAN HEALTH SYSTEM QUALITY IMPROVEMENT

38

Applied during Vaccination Rollout

- Established a team between SHA, College of Medicine, HQC
- Sought permission to join vaccination team report outs and huddles
- Produced regular briefings for leaders


UNIVERSITY OF MICHIGAN HEALTH SYSTEM QUALITY IMPROVEMENT

39

Do you want **❤️QI** socks?

Become a QI Power Hour speaker!

[Visit our website to learn more!](#)



43 Connect to Audio using Audio Broadcast

43

Post webinar survey

In the spirit of quality improvement, we will be sending out a survey after the webinar.

You may see this message, but don't be alarmed, our survey is on a trusted site!

External Site

The host or presenter would like Webex Meetings to open a website on your computer. Cisco is not responsible for the content or availability of external sites. We recommend that you make sure the website content is from a trusted source. If you view this page or go to this site you will be added to the privacy policy and terms and conditions of the destination site. Destination site: <https://www.surveymonkey.com/NETCOM>

[Continue](#)

44 Connect to Audio using Audio Broadcast

44

Next up...

BACK TO BASICS: THE MODEL FOR IMPROVEMENT
With CARLA FLOGAN & GLENDA BEAUCHAMP

Friday, October 29, 2021
9:30-10:30 am CST

To register, [visit our events page](#)



45 Connect to Audio using Audio Broadcast

45
